

# FMACT

FARGO/MOORHEAD  
COMMUNITY THEATRE

## THEATRE FOR YOUNG AUDIENCES



ACCEPT NO  
SUBSTITUTES!



BOOK, MUSIC & LYRICS BY: JOAN CUSHING  
BASED ON THE BOOKS BY HARRY ALLARD,  
ILLUSTRATED BY JAMES MARSHALL

### Sun, March 9

Sensory-friendly at 12:00pm  
Public performance at 2:00pm

### Sun, March 16

Public performances  
at 12:00 & 2:00pm

The Hjemkomst Center – Moorhead MN

# A NOTE FROM THE DIRECTOR OF "MISS NELSON IS MISSING", SHELBY SEELEY

Since its publication in 1977, *Miss Nelson is Missing!* has remained a beloved classic, cherished for its timeless humor, distinctive artwork, and universal themes. Generations of children have grown up with this story, and its continued presence in classrooms speaks to its enduring appeal. Over the years, the tale has inspired sequels and adaptations, including *Miss Nelson is Missing: The Musical*, first produced in 2001 and still widely performed nearly 25 years later—by student theatre clubs and professional houses alike.



Few children's stories achieve the kind of longevity and cultural impact that *Miss Nelson is Missing!* has. Its message remains as relevant today as ever: kindness matters. Through the humorous contrast between the warmhearted Miss Nelson and the formidable Miss Viola Swamp, the play reminds us all—young and old—of the importance of respect, appreciation, and the consequences of taking people for granted. At a time when the world could use a little more kindness, this story serves as a playful yet meaningful reminder to value those who support and care for us.

Thank you to Fargo-Moorhead Community Theatre for spreading this message to students young and old, and for supporting and caring for me throughout this fun and exciting endeavor. What an honor and a privilege to work with such a talented group, and to share it with you.

I hope you enjoy the show!

# SCENES & SONGS

SCENE 1: Horace B. Smedley Elementary School

The Horace B. Smedley Alma Mater .....The Kids of 207

SCENE 2: Classroom #207

The Worst Kids of All .....Miss Nelson, The Kids of 207

SCENE 3: Classroom #207

Carried Away .....Mr. Blandsworth

The Swamp Song .....Miss Viola Swamp

SCENE 4: Outside Miss Nelson's House

What If .....The Kids of 207

SCENE 5: The McSmogg Detective Agency

McSmogg is Here .....Detective McSmogg

SCENE 6: Horace B. Smedley Elementary School

Miss Nelson is Missing .....The Kids of 207

SCENE 7: Classroom #207

SCENE 8: Miss Nelson's House

The Secret Song .....Miss Nelson

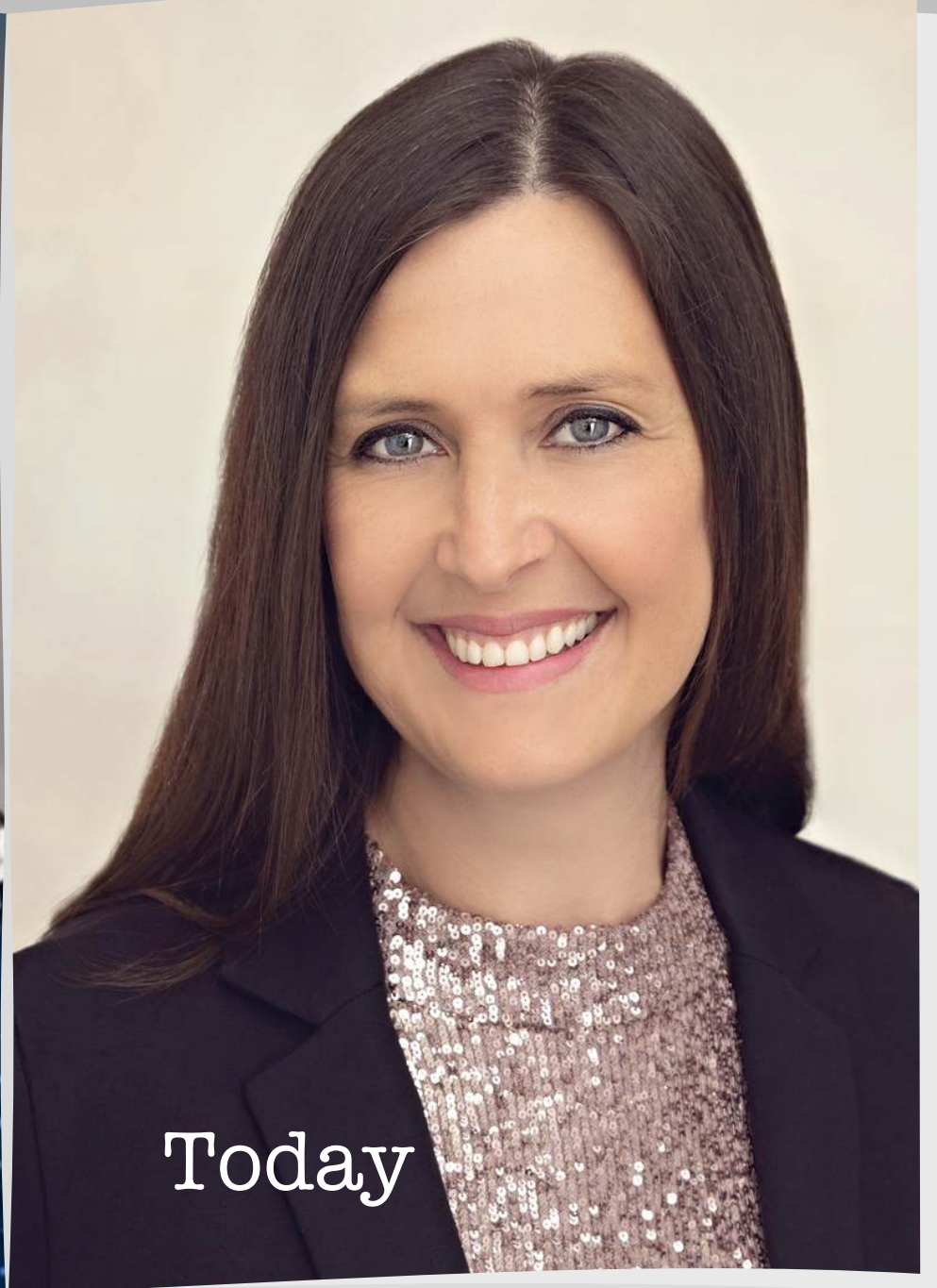
SCENE 9: Classroom #207

Alma Mater Reprise .....The Kids of 207

Finale .....Ensemble



2nd Grade

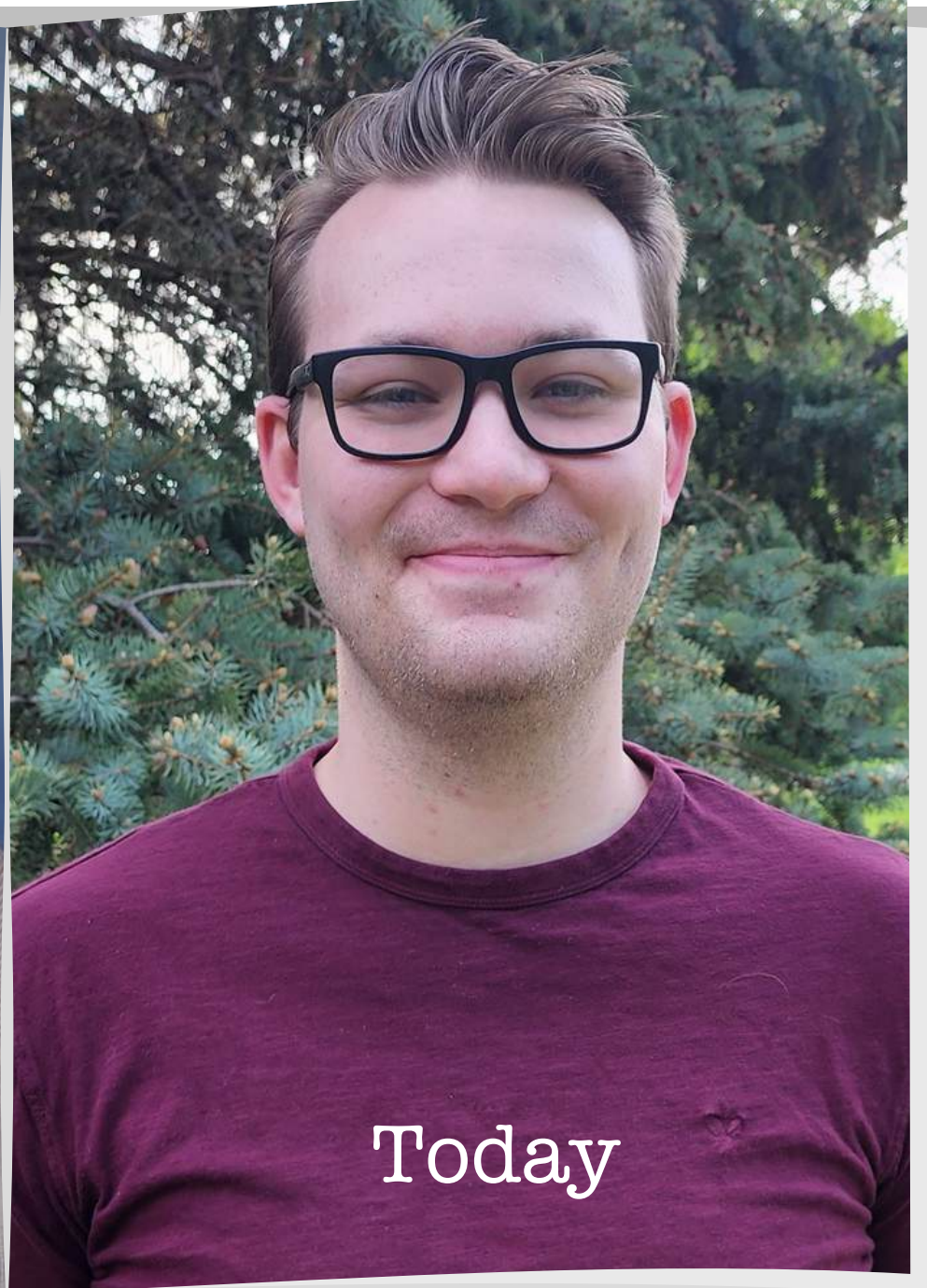


Today

# Shanna Franzen

Miss Nelson / Viola Swamp

Shanna has had the best time bringing these two wildly different characters to life onstage! When she's not on the stage, Shanna works behind the scenes as the Marketing Director at FMCT. She was 6 years old when she performed in her first play, Missoula Children's Theatre's "Pinocchio", and has been in over 30 productions since then! "Miss Nelson is Missing" is the 4th TYA show she has been involved with at FMCT, and it is one of her favorite things to do! Shanna lives in Moorhead with her 3 amazing kids, her partner Ryan, and their 3 cats & 2 dogs.



# Joey Wilhelmi

Pop Hanson / Mr. Blandsworth /  
Detective McSmogg

Joey Wilhelmi is excited to be a part of Miss Nelson is Missing here at FMCT. Lately, he has been working the technical side of theater here at FMCT but, is ready to step out onto the stage again. Joey has been doing theater with his family since he was young, and is happy to act alongside his sister Liz once again. He recently worked with FMCT in the ensemble of Rent.



Preschool



Today

# Liz Wilhelmi

## Cheryl

Liz Wilhelmi is a recent graduate of NDSU with a degree in music and psychology. She has been performing on stage since she was 5 years old, with some of her first and favorite memories being at FMCT! She has loved being a part of this show, both as the music director/choreographer, as well as one of the students at Horace B. Smedley. This show has been one of the most enjoyable processes she's been in, and she hopes the audience has as much fun as she does!



3rd Grade



Today

# Josie Cass Allison

Josie is a performer and choreographer from the Fargo-Moorhead area. She was most recently seen in FMCT's productions of Winter Wonderettes (Suzy), Carrie (Sue Snell), Junie B. Jones (Camille), and Goosebumps: The Musical (Cami, Choreographer), as well as Harwood Prairie Playhouse's production of Lend Me a Soprano (Jo). She has choreographed Descendants, Little Shop of Horrors, & Grease for FMCT Education, as well as Liberty Middle School's production of Percy Jackson: The Lightning Thief. She is a graduate from the University of Texas-Arlington with a BFA in Musical Theatre and a Dance minor.

[josiecass.com](http://josiecass.com)

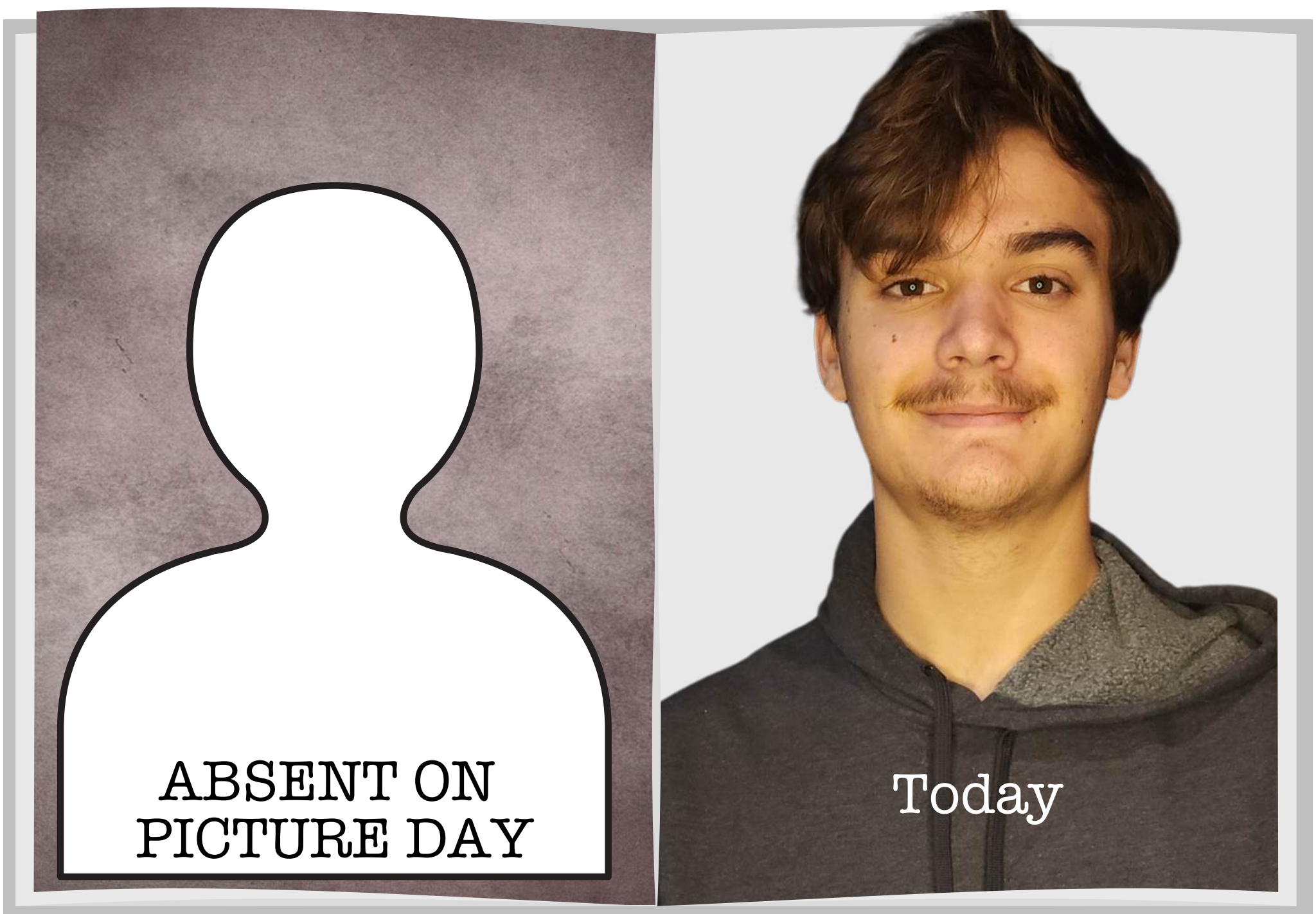


# Drew Relling

Gregory

Drew Relling (Gregory) grew up in Grand Forks and graduated from NDSU in 2023 with a BFA in Musical Theatre. He is excited for his first show at FMCT. He has previously been seen in the area as Jimmy in *Miracle on South Division Street* at Theatre B.





# Jackson Buckingham

## Adam

Jackson has been doing theater since 6th grade. He graduated High School from Kennedy Secondary School with the class of 2024. Last summer, he played the part of Gomez in The Addams Family at Trollwood, and performed in the ensemble of Carrie: The Musical with FMCT last fall. Jackson is thrilled to be involved with another FMCT production and he hopes to keep being involved with theater in the future.

# PRODUCTION TEAM

Director .....Shelby Seeley  
Music Director & Choreographer .....Liz Wilhelmi  
Costume Designer .....Gina Bar-El  
Scenic Designer, Props .....Anna Kann  
Lighting Designer .....Judy Lewis  
QLab operator, technical direction.....Rick Lewis  
Sound board operator .....Keith Schweigert  
Light board operator .....Josh Tappe

# FMCT STAFF

Executive & Artistic Director .....Judy Lewis  
Marketing Director .....Shanna Franzen  
Technical Director .....Rick Lewis  
Operations Coordinator .....Sydney Loewen  
Master Carpenter & Minister of Magic .....Anna Kann  
Production Manager & Scenic Charge .....Katie Link  
Costume Designer .....Gina Bar-El  
Box Office Manger .....Kayla Rice  
Finance Manager .....Kim Rensvold  
Gaming Manager .....Rick Stenseth  
Production Assistants .....Liz Wilhelmi, Josh Tappe  
Front-of-House Team: Amanda Kadrmas, Tami Mangahas, Dawn Thompson, Rick Mangahas, Reid Strand, Jordan Franzen, Asha Franzen, Mike Finch, Keith Schweigert

# SPECIAL THANKS TO:

Perry Rust Photography

MSUM (props)

Long X Arts Foundation - Jessie Veeder Scofield

Watford City High School Theatre

Harvey Arts Alliance - Debbie Kourajian

Dakota Montessori

Fargo Public Schools

Kindred Public Schools

West Fargo Public Schools

Oak Grove Lutheran School

Moorhead Public Schools

JPII Catholic Schools

St. Joseph's School

Dilworth-Glyndon-Felton Elementary

Academy For Children Montessori

Climax-Shelly Elementary

Trinity Lutheran Preschool

Detroit Lakes Roosevelt Elementary

# About FMCT's Theatre for Young Audiences productions:

"Miss Nelson Is Missing" is a Theatre for Young Audiences adaptation of the popular children's book by Harry Allard and James Marshall, designed to engage and entertain young audiences while delivering important lessons. The show includes interactive elements, catchy songs, and humorous moments that make the experience enjoyable for young audiences.

The plot revolves around a class of misbehaving students who learn valuable lessons about appreciation and respect. It addresses themes such as behavior, consequences, and empathy, and teaches children the importance of respecting their teachers and understanding the impact of their actions on others. Children can see themselves in the students of Room 207, which helps them connect with the story and its messages.

Each year, FMCT's TYA musical brings beloved children's characters to life, performing during the school day for over 3,000 children in area schools. The show also goes on tour to Harvey, ND and Watford City, ND to bring the production to rural audiences across the state.

FMCT provides a 20-page study guide packed with interdisciplinary activities that align with North Dakota's Kindergarten and Second grade theatre standards. Area teachers use the lesson plans from FMCT educational programming, read the books in their classrooms, and attend the play with their students.

Watching and participating in theatre can enhance children's cognitive abilities, including critical thinking, problem-solving, and language skills. The interactive nature of TYA shows allows students to practice social skills and theatre etiquette in a safe and supportive environment.

Studies show that introducing children to theatre through engaging and relatable stories like "Miss Nelson Is Missing" helps foster a lifelong appreciation for the arts.



*The cast of "Miss Nelson is Missing" greet students as they depart the theater.*



# PETER PAN

## A MUSICAL ADVENTURE

Music by George Stiles, Lyrics by Anthony Drewe  
Book by Willis Hall

presented by arrangement with Concord  
Theatricals. [www.concordtheatricals.com](http://www.concordtheatricals.com)

# PRODUCTION CAMP

## GRADES 2-4 AND 5-9

## JUNE 30 - AUG 10

For class details, dates & times or to  
register, visit [fmct.org/education](http://fmct.org/education)

You can  
be a

Star

with  
FMCT's  
Summer  
Theatre  
Camps

SCHOLARSHIPS  
AVAILABLE!



**FMCT**  
EDUCATION

Weeklong  
creative camps  
June 2-27

For more info or to  
register, visit  
[fmct.org/education](http://fmct.org/education)

GRADES K-2: Moana Meets Elsa, Bluey, Disney  
Heroes vs. Villains, Rumpelstiltskin

GRADES 3-5: Harry Potter, Hiccup Meets Simba,  
Dog Man, Lilo & Stitch, Disney Heroes vs. Villains

GRADES 6-9: Stage Combat, Tech Camp

PERFORMANCE CAMPS: Peter Pan the Musical  
Adventure

# THANK YOU TO OUR GRANT AND COMMUNITY PARTNERS:

*This project is supported in part by a grant from the North Dakota Council on the Arts, which receives funding from the state legislature and the National Endowment for the Arts:*



## FM Area Foundation

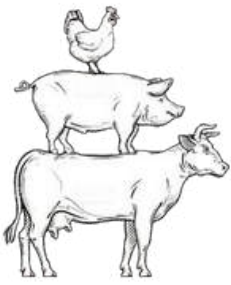




*Hornbacher's*



*Jay's Smokin'*



**BBQ**



**DREKKER**  
BREWING COMPANY

LONG X ARTS FOUNDATION







**Heritage Gift Shop**

Hours 9-5pm Mon-Sat.  
12-5PM Sun.

FROM COOKBOOKS TO APPAREL  
THE PERFECT GIFT AWAITS!

Located at the Hjemkomst Center  
202 1st Avenue North | Moorhead, MN 56560  
(218) 299-5511 | [www.hcscconline.org](http://www.hcscconline.org) | [www.facebook.com/hcscconline](http://www.facebook.com/hcscconline)  
[www.instagram.com/hcscconline](http://www.instagram.com/hcscconline)

**HISTORICAL & CULTURAL SOCIETY**  
OF OLAV COUNTY



**It Takes 2.0**  
with Amy & JJ



[www.ndautismcenter.org](http://www.ndautismcenter.org)

**LOVE  
WHERE  
YOU  
WORK.**



SCAN ME



Join our Family  
Support Staff!



**FARGO LOCATIONS**



**ALWAYS MORE THAN 200 ITEMS ON SALE!  
HAPPY-HARRYS.COM**

**FARGO-MOORHEAD SYMPHONY ORCHESTRA**

**BLISS**

MASTERWORKS SERIES: IV  
**MARCH 15 & 16**  
NDSU FESTIVAL CONCERT HALL

[FMSYMPHONY.ORG](http://FMSYMPHONY.ORG)

CLICK ON THE IMAGE TO VISIT THEIR WEBSITE!

An illustration of a hiker from behind, wearing a bright orange jacket, a blue cap, and blue boots. The hiker is walking on a snowy path through a forest of tall, thin trees. The scene is rendered in a stylized, graphic manner with a color palette of blues, oranges, and whites. Snow is falling around the hiker, and the trees are covered in snow. The overall mood is serene and adventurous.

Schubert's

# WINTERREISE

Thursday, April 3, 7:30PM

Sunday, April 6, 2:00PM

FARGO MOORHEAD

# opera

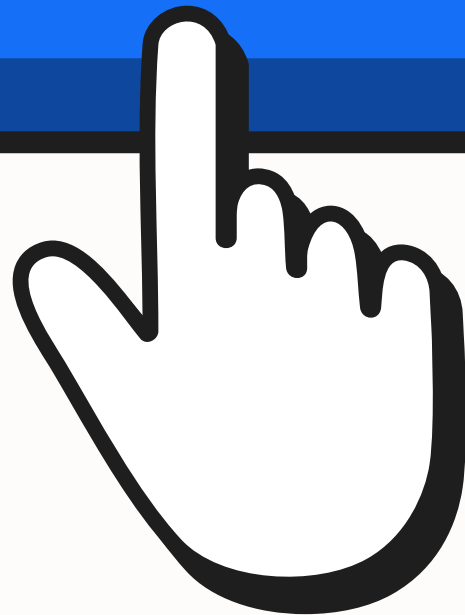
*Live. Local. Excellent.*

# FMCT

FARGO / MOORHEAD  
COMMUNITY THEATRE

WE WANT TO HEAR FROM YOU!  
What would you, our FMCT patrons,  
like to see from us? Take our brief  
survey and provide your input!

**TAKE SURVEY**



For more information, to purchase tickets,  
find auditions, volunteer opportunities and  
learn more about us, visit [fmct.org](https://fmct.org).

Stay in-the-know by following  
us on social media:



# FMCT'S GIVING HEARTS DAY 2025 DONORS:



Mike Aasen	Karol Cossette
Warren Ackley	Daniel Damico
Dave Akkerman	Barbara Delaney
Jennifer Anderson	David Deplazes
Pamela Andrist-Burns	Jae Dewald
Rebecca Barry	Ryan Dorrheim
Casey Bartz	Amy Eberhard
Tammy Bates-Hurley	Craig A. Ellingson
Dante Battocchi	Pamela Emanuelson
Jeremiah Beard	James Erickson
Pam Beckius	Ronald Erickson
Patricia Belknap	Jocelyn Estrem
Tara Bennett	Emily Fenster
Janet Berg	Meghan Finch
Carrie Bjorge	Noah Ford-Dunker
Barbara Bougie	Shanna Franzen
Cherryl Braton	Tom Froning
Eloise Breikjern	Leah Froseth
Mackenzie Brimm	Pam Gibb
Jean Broad	Annette Gilles
Elair and Joyce Brothen	David Gooch
Richard Brudvik	Sara Granger
Jodi Bullinger	Dawn Gunderson
James Burgum	Glen Haekenkamp
Mike Byham	Chloe Hall
Lisa Campbell	Patti Hall
Janet and Larry Carlson	Troy Hall
Shelly Carlson	Matthew Hallaway
Aaron Carson	Jacalyn Halvorson
Kim Carter	James Hambrick
Suzanne Castilla	Audra Hanson
Dallas Christiansen	Kathryn Hanson
Kerry and Chuck Christman	Bruce Harmon
Joy Ciaffoni	Brian Hayer
Shelby Cochran & Eric Lillehaugen	Shirley E Hayer

# FMCT'S GIVING HEARTS DAY 2025 DONORS (CONTINUED):



Jakelle Hoffmann	Katie Link
Larry Holmstrom	Karin Luchsinger
Stephanie Honek	Darrel & Lois Lund
Carol Hopp	Dan and Kim Mahli
Lavonne Horton	Katie Maple
Julie Hudson	Marcia McMullen
Family of Jane Hella	Kellie Meehlhause
Deborah Johnsen	Heidi and James Meline
Amy and Tim Johnson	Paul and Myra Meyers
Barry Johnson	Kacie Miller
Edwin Judisch	Donna Monteith
Jessica Kaiser	Austin & Laura Morris
Anja Kalvoda	Shelby Naser
Jim Kapitan	Sarah Nelson
Kathy Kelly	Charles Newman
Diane Kjelstrup	Victoria Williams
James & Valerie Kjelstrup	Paul O'Donnell
Sharon Kleeman	Gene Okerlund
Vicki Klein	Ardell Olson
Pam Kloos	Marvine Olson
Joshua Kohl	Megan Olson
David Kolpack	Michael Olson
Terry Koppang	Cheryl Omeara
Debbie Kourajian	Maren Ortmeier
Richard & Sharon Krabbenhoft	Naomi Paasch
Lynette Kriedeman	Sandra Payne
Emily Kulland	Claudette & Tim Peterson
Tracy & Mike LaMont	Pamela Peterson
David Lassig	Stephen Poitras
Shirley Leiphon	Kathy Polansky
Chris LeTexier	Sheila Remboldt
Judy Lewis	Tim and Kim Rensch
Kyle Lidberg	Diane Rensvold
Kenny Lindley	Kim Rensvold
John Lindstrom	Aaron Retterath

**FMCT'S GIVING HEARTS DAY  
2025 DONORS (CONTINUED):**



Sandra Reynolds  
Kayla Rice  
Rachel Rice  
Cody Rowe  
Alison Rowell  
Diane Rustad  
Caryl Rutten  
Lucas Rutten  
Danielle Salmon  
Jean Sando  
Jim Schaefbauer  
Marjorie Schlossman  
Mary Schneider  
Lois Schwarz  
Marijo Schwengler  
Brett Shewey  
Alicia Skalsky  
Steve Skoblik  
Dennis C Smith  
Jeanette Smith-Murphy  
Julie Snortland  
Betsy Stadick  
Robert & Bridgette Startz  
Gary Steichen  
Richard Stenseth  
John Stern  
Jim Swanson  
Nicole Swanson  
Delynda Tappe  
Christy Tehven  
Sandy Thiel  
Mike Thorstad  
Jeremy Ulmer  
Karla Underdahl

Deb Vaagen  
Jane E Vanhatten  
Sandra Wagner  
Jasen Walker  
Steven Weber  
Shelley Weidner  
Beverly Weigel  
Nancy White  
Kenyon Williams  
Robin Williams  
Duncan Williamson  
Holly and Ryan Younggren  
Carolyn Zehren

*Thank  
you!*

**THE FOLLOWING IS A STATEMENT  
INCLUDED IN THE 1946 PLAYBILL FROM  
THE FARGO MOORHEAD COMMUNITY  
THEATRE FOUNDING PARTNERS,  
ARTICULATING THEIR VISION FOR THE  
NEWLY FORMED THEATRE:**

“With the establishment of a Community Theater, residents of Fargo-Moorhead now share with people in many other cities of the nation the opportunity to regularly see offerings of the legitimate theater. With continuation of the present support the Theater will soon find its permanent place in our community.

The Theater was organized in February after several meetings of people with varying interests and backgrounds but a common interest in the stage; there were potential actors, designers of costumes and scenery, stagehands, directors, makeup artists, house managers, producers—and some folks who just liked to see plays. Each was able to contribute something to the development of a well-rounded organization. A play was selected, a director secured and production started. Public response to ticket sales already assures the Theater of being self supporting...

...it is the purpose of the Theater to present professionally produced legitimate stage plays for the entertainment of patrons, to provide opportunities for those people who are interested in working in the theater either as a hobby or preliminary to a professional career and to make these opportunities available to everyone without regard to race, creed, color or position in life.”